



2018 PRODUCT CATALOG

TRUCK & BUS RADIAL (TBR)

1912

A tire dealer in New Jersey by the name of George F. Armstrong enters the tube & pneumatic tire industry in a tiny loft

1961

Armstrong became the fifth-largest tire maker in the world, and ranked amongst the Fortune 500 companies

1970

The Armstrong Rubber Company moved into its \$7 million headquarters designed by renowned architect Michael Brauer in New Haven, Connecticut

1922

After a decade of promising growth, Armstrong purchases a small tire manufacturing concern in New Haven, Connecticut

1965

Armstrong introduced the first bias-belted fiberglass tire, one of many inventions



1988

Armstrong was acquired by Pirelli S.p.A,
becoming Pirelli Armstrong Tire Corporation

2012

Newly reengineered, the Armstrong
brand returns to the tire industry as
an independent entity

1986

Armstrong achieved a record
sales volume worth \$1 Billion

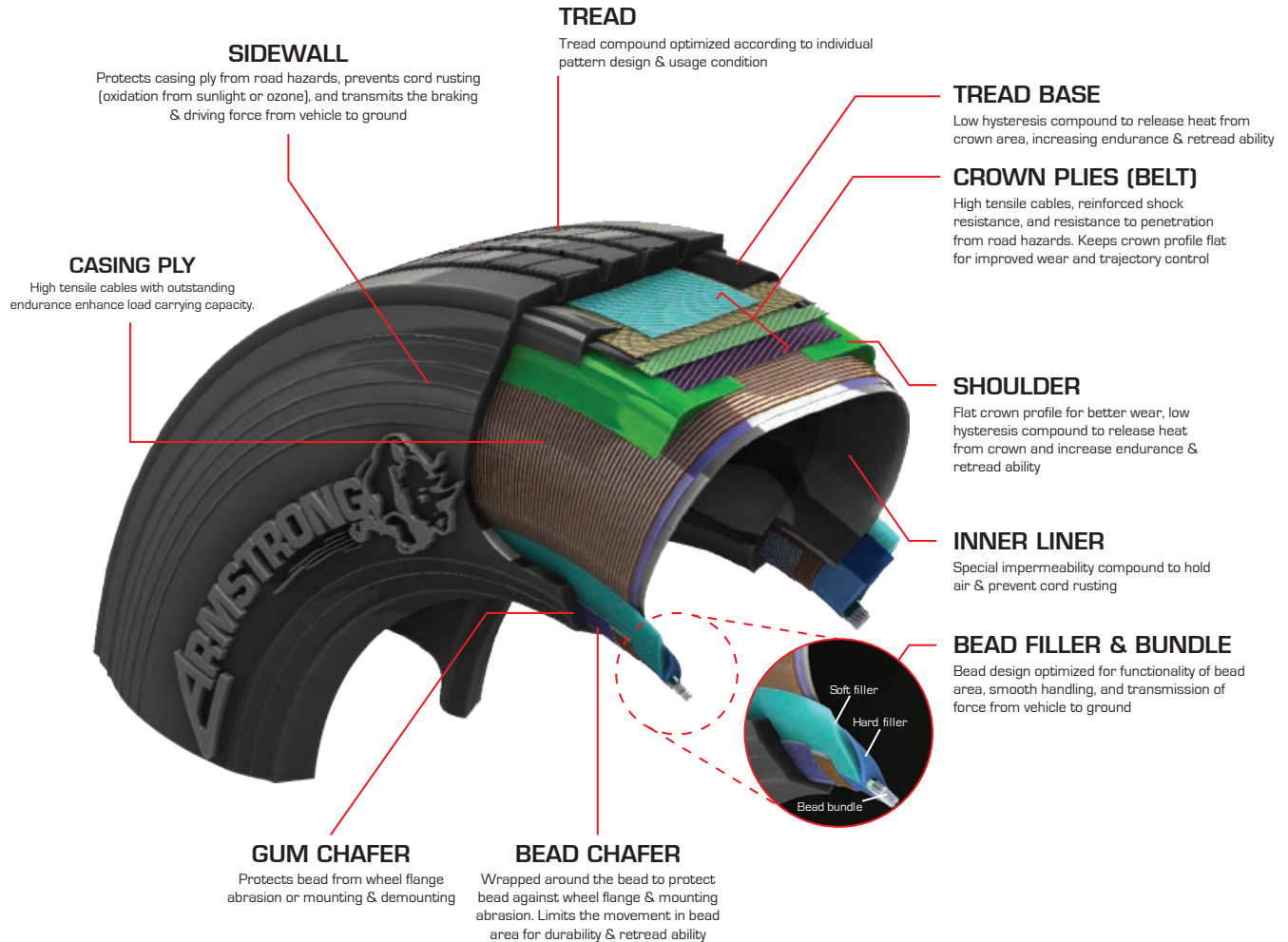
1990'S

Pirelli phases out the Armstrong
brand in the latter half of the 1990's

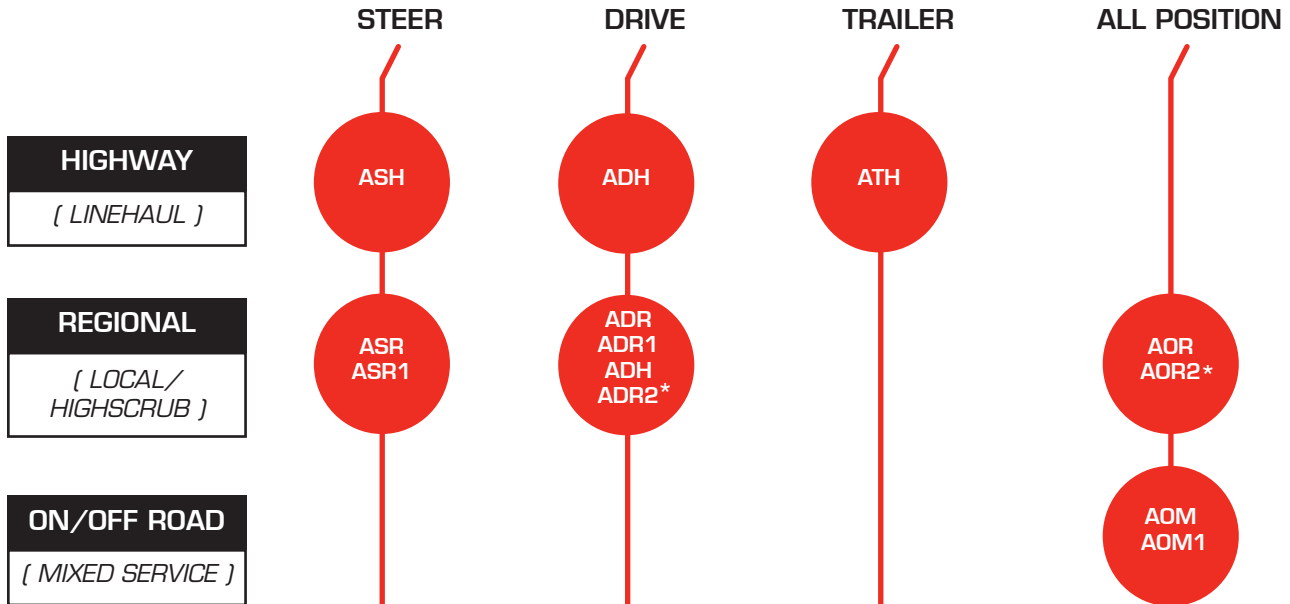


A close-up, low-angle shot of an Armstrong tire tread. The tread features a complex, multi-lobed pattern with several small, curved sipes within each lobe. The tire is dark, and the lighting creates strong highlights and shadows, emphasizing the texture and depth of the tread. A horizontal red bar is overlaid across the middle of the image, containing the text.

INSIDE AN ARMSTRONG TIRE



PRODUCT PORTFOLIO



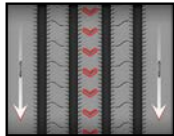
UPCOMING PATTERNS

Pattern Name	Position	Tire Size	Ply Rating	Application
AOWH	ALL POSITION	315/80R22.5	20PR	ON/OFF ROAD
AORV	ALL POSITION	245/75R22.5	14PR	REGIONAL
AORV	ALL POSITION	265/75R22.5	14PR	REGIONAL

ASH+



Premium steer axle tire for long-haul applications offering excellent traction and sharp steering



Directional tread design offers excellent road grip & wet traction



De-coupling grooves & wider shoulder ribs help to minimize irregular wear



Siping on the tread ensures sharp steering and reduction in noise



Tire Size	PR	L/SS	Rim Width	Max. Load (Single)		Max. Load (Dual)		Relative Pressure		Section Width		Overall Diameter		Tread Depth	
			Inches	kgs	lbs	kgs	lbs	psi	kpa	mm	inches	mm	inches	mm	32nds
11R22.5	14	144/141M	8.25	2800	6175	2575	5675	110	760	280	11.02	1040	40.94	18	23
11R22.5	16	148/145M	8.25	3000	6940	2725	6395	125	830	280	11.02	1050	41.34	18	23
295/75R22.5	14	144/141L	9.00	2800	6175	2575	5675	110	760	286	11.26	1024	40.31	14	18
11R24.5	14	146/143M	8.25	3000	6610	2725	6005	105	720	285	11.22	1103	43.43	14	18
11R24.5	16	149/146M	8.25	3250	7160	3000	6610	120	830	285	11.22	1103	43.43	14	18
285/75R24.5	14	144/141L	8.25	2800	6175	2575	5675	110	760	280	11.10	1052	41.61	15	18



ADH



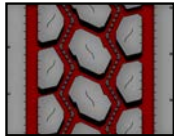
Premium drive axle tire for long-haul applications offering increased mileage and resistance against uneven wear



Closed and solid shoulder ribs offer excellent resistance against irregular wear



Optimized block design and stone ejectors prevent retention of stones



Deeper tread increases the tire life considerably in high torque applications



Tire Size	PR	LI/SS	Rim Width	Max.Load (Single)		Max.Load (Dual)		Relative Pressure		Section Width		Overall Diameter		Tread Depth	
			Inches	kgs	lbs	kgs	lbs	psi	kpa	mm	inches	mm	inches	mm	32nds
11R22.5	14	144/141L	8.25	2800	6175	2575	5675	110	760	285	11.2	1068	42.0	23	29
11R22.5	16	148/145L	8.25	3150	6940	2900	6395	125	860	285	11.2	1068	42.0	23	29
295/75R22.5	14	144/141L	9.00	2800	6175	2575	5675	110	760	291	11.5	1039	40.9	23	29
11R24.5	14	146/143J	8.25	3000	6610	2725	6005	105	720	285	11.2	1120	44.1	23	29
11R24.5	16	149/146L	8.25	3250	7160	3000	6610	120	830	285	11.2	1124	44.1	23	29
285/75R24.5	14	144/141L	8.25	2800	6175	2575	5675	110	760	282	11.1	1075	42.3	23	29



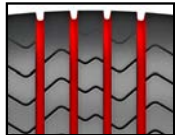
ATH



Premium trailer tire for long haul application offering extraordinary mileage and resistance to uneven shoulder wear



Uniquely designed shoulder grooves provide outstanding resistance to uneven shoulder wear



Four circumferential grooves evacuate water quickly and deliver exceptional handling



Shallow tread reduces rolling resistance significantly and offers good resistance to heat buildup and scrubbing



Tire Size	PR	LI/SS	Rim Width	Max.Load (Single)		Max.Load (Dual)		Relative Pressure		Section Width		Overall Diameter		Tread Depth	
			Inches	kgs	lbs	kgs	lbs	psi	kpa	mm	inches	mm	inches	mm	32nds
11R22.5	14	144/141L	8.25	2800	6175	2575	5675	110	760	280	11.0	1040	40.9	10	13
11R22.5	16	148/145L	8.25	3150	6940	2900	6395	125	860	283	11.0	1040	40.9	10	13
295/75R22.5	14	144/141L	9.00	2800	6175	2575	5675	110	760	286	11.3	1013	39.9	10	13
11R24.5	14	146/143M	8.25	3000	6610	2725	6005	105	720	282	11.1	1103	43.4	10	13
11R24.5	16	149/146M	8.25	3250	7160	3000	6610	120	830	286	11.1	1093	43.4	10	13
285/75R24.5	14	144/141L	8.25	2800	6175	2575	5675	110	760	277	10.9	1042	41.0	10	13



ASR



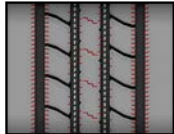
Steer axle tire designed exclusively for pickup and delivery applications offering improved handling and steering



Groove bottom protectors prevent stone drilling and retention



Solid shoulders help in even wear while giving precise steering and maneuverability



Optimized siping on inner ribs improves handling and yields excellent traction



Tire Size	PR	LI/SS	Rim Width	Max.Load (Single)		Max.Load (Dual)		Relative Pressure		Section Width		Overall Diameter		Tread Depth	
			Inches	kgs	lbs	kgs	lbs	psi	kpa	mm	inches	mm	inches	mm	32nds
225/70R19.5	14	128/126L	6.00	1800	3970	1700	3750	110	760	218	8.9	813	32.2	13	16
245/70R19.5	16	136/134L	6.75	2240	4940	2120	4675	120	827	246	9.7	840	33.1	13	16
265/70 R19.5	14	140/138L	7.50	2500	5511	2360	5202	110	760	262	10.3	866	34.1	14	17
11R22.5	14	144/141M	8.25	2800	6175	2575	5675	110	760	280	11.0	1055	41.5	15	19



Tire Size	PR	LI/SS	Rim Width	Max.Load (Single)		Max.Load (Dual)		Relative Pressure		Section Width		Overall Diameter		Tread Depth	
			Inches	kgs	lbs	kgs	lbs	psi	kpa	mm	inches	mm	inches	mm	32nds
11R22.5	16	146/143M	8.25	3000	6610	2725	6005	120	830	280	11.0	1055	41.5	15	19
255/70R22.5	16	140/137L	7.50	2500	5510	2300	5070	120	830	255	10.0	935	36.8	12	15
295/75R22.5	14	144/141L	9.00	2800	6175	2575	5675	110	760	286	11.3	1026	40.4	16	20
11R24.5	14	146/143M	8.25	3000	6610	2725	6005	105	720	286	11.3	1106	43.5	16	20
11R24.5	16	149/146M	8.25	3250	7160	3000	6610	102	830	286	11.3	1106	43.5	16	20
285/75R24.5	14	144/141L	8.25	2800	6175	2575	5675	110	760	283	11.1	1056	41.6	16	20

Upcoming Sizes

Tire Size	PR
275/70R22.5	18

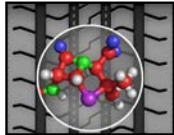


ASR1

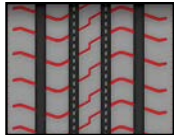
Steer axle tire exclusively designed with 'All Position' capability for regional applications offering long mileage and resistance against abrasion



Square shoulders combat irregular wear, enhancing cornering & delivering long mileage



Special tread compound offers extra-ordinary resistance against abrasion



Siping on the tread offers remarkable road grip in both dry & wet conditions



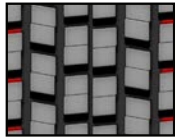
Tire Size	PR	LI/SS	Rim Width	Max.Load (Single)		Max.Load (Dual)		Relative Pressure		Section Width		Overall Diameter		Tread Depth	
			Inches	kgs	lbs	kgs	lbs	psi	kpa	mm	inches	mm	inches	mm	32nds
12R22.5	16	152/148M	9.00	3550	7830	3150	6940	125	860	302	11.6	1101	42.8	16	20
295/80R22.5	16	152/148M	9.00	3550	7830	3150	6940	125	860	295	11.6	1050	41.3	16	20
315/80R22.5	20	156/150L	9.00	4000	8820	3350	7390	125	860	310	12.2	1085	42.7	16	20



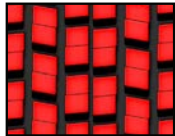
ADR



Drive axle tire designed for regional service applications offering improved traction and the ability to withstand high load conditions



Open shoulder design offers excellent traction in wet conditions



Optimized block shape and unique tread design prevents irregular wear and stone retention



Deeper original tread depth & wider tread delivers longer tire life



Tire Size	PR	LI/SS	Rim Width		Max.Load (Single)		Max.Load (Dual)		Relative Pressure		Section Width		Overall Diameter		Tread Depth	
			Inches	mm	kgs	lbs	kgs	lbs	psi	kpa	mm	inches	mm	inches	mm	32nds
11R22.5	14	144/142L	8.25	212	2800	6172	2650	5842	125	720	280	11.0	1061	41.8	19	24
11R22.5	16	148/145M	8.25	212	3150	6940	2900	6395	125	860	280	11.0	1061	41.8	19	24
295/75R22.5	14	144/141L	9.00	229	2800	6175	2575	5675	110	760	287	11.3	1064	40.8	20	26
11R24.5	14	146/143L	8.25	212	3000	6613	2725	6007	105	720	284	11.2	1093	43.0	20	20
11R24.5	16	149/146L	8.25	212	3250	7165	3000	6613	120	830	284	11.2	1094	43.1	20	22
285/75R24.5	14	144/141L	8.25	212	2800	6172	2575	5676	110	760	286	11.3	1036	41.9	22	20



ADR1

Drive axle tire for regional applications offering superior road grip and retreadability



Open shoulder design results in quicker water evacuation, thereby offering superior road grip



Optimized block shape and unique tread design prevents irregular wear and stone retention



Deeper grooves ensure better traction and prolonged tire life

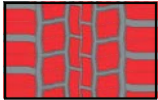


Tire Size	PR	LI/SS	Rim Width	Max.Load (Single)		Max.Load (Dual)		Relative Pressure		Section Width		Overall Diameter		Tread Depth	
			Inches	kgs	lbs	kgs	lbs	psi	kpa	mm	inches	mm	inches	mm	32nds
225/70R19.5	14	128/126L	6.00	1800	3970	1700	3750	110	760	225	8.9	820	32.2	15	19
245/70R19.5	16	136/134L	6.75	2240	4940	2120	4675	120	830	247	9.7	845	33.1	15	19
12R22.5	16	152/148M	9.00	3550	7830	3150	6940	125	860	302	11.9	1101	43.3	22	28
295/80R22.5	16	152/148M	9.00	3550	7830	3150	6940	125	860	295	11.6	1066	42.0	22	28
315/80R22.5	20	156/150L	9.00	4000	8820	3350	7390	125	860	310	12.2	1095	43.1	22	28



ADR2* NEW

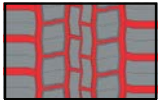
Drive axle tire for regional applications with a unique five-lug pattern



Unique five-lug pattern designed to offer firm grip and cornering ability



Open shoulder design ensures quicker evacuation of water, delivering strong road grip



Deeper and wider grooves increase mileage and enhances service life



Uniform tread block design bears load evenly



Tire Size	PR	LI/SS	Rim Width		Max.Load (Single)		Max.Load (Dual)		Relative Pressure		Section Width		Overall Diameter		Tread Depth	
			Inches	mm	kgs	lbs	kgs	lbs	psi	kpa	mm	inches	mm	inches	mm	32nds
215/75 R17.5	14	126/124L	6.00	152	1700	3747	1600	3527	120	690	210	8.2	771	30.3	13	16
235/75 R17.5	14	132/130M	6.75	171	2000	4409	1900	4188	112	775	235	9.3	800	31.5	13	16
235/75 R17.5	18	143/141J	6.75	171	2725	6007	2575	5676	125	860	235	9.3	800	31.5	13	16

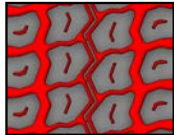


AOM

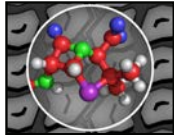
Wide base, 'All Position' tire for mixed service application offering improved floating and traction and the ability to withstand overloads



Rugged and aggressive tread design improves floatation & traction in soft soil & mud



Wider circumferential grooves enhance wet traction & large lugs help in withstanding overload



'Cut & Chip' resistance compound resists off road abuse



Tire Size	PR	LI/SS	Rim Width	Max.Load (Single)		Inflation Pressure		Section Width		Overall Diameter		Tread Depth	
			Inches	kgs	lbs	psi	kpa	mm	inches	mm	inches	mm	32nds
385/65R22.5	20	160K	11.75	4500	9920	130	900	386	15.2	1076	42.4	18	22
425/65R22.5	20	165K	13.00	5150	11400	120	830	433	17.1	1127	44.4	18	23



AOM1

High scrub "All Position" radial with high load carrying capacity and special 'Cut & Chip' Compound



Special zigzag tread design offers extraordinary resistance to cuts, chips, tearing, and irregular wear, making it ideal for high scrub urban applications



Deeper tread design delivers exceptional traction and longer mileage, while wider circumferential grooves help in quick evacuation of mud & silt



Lugs on shoulders withstand impacts and enhance traction performance in both wet & dry conditions



Tire Size	PR	LI/SS	Rim Width	Max.Load (Single)		Max.Load (Dual)		Relative Pressure		Section Width		Overall Diameter		Tread Depth	
			Inches	kgs	lbs	kgs	lbs	psi	kpa	mm	inches	mm	inches	mm	32nds
315/80R22.5	20	160/157J	9.00	4535	9920	4125	9095	130	900	306	12.0	1084	42.7	16	19
315/80R22.5	22	160/157J	9.00	4535	9920	4125	9095	130	900	309	12.2	1084	42.7	16	19
11R22.5	14	144/142K	8.25	2800	6172	2650	5842	105	720	280	11.0	1055	41.5	16	20
11R22.5	16	148/145K	8.25	3150	6944	2900	6393	125	860	280	11.0	1055	41.5	16	20
11R24.5	14	146/143K	8.25	3000	6613	2725	6007	105	720	287	11.3	1114	43.9	19	24
11R24.5	16	149/146K	8.25	3250	7165	3000	6613	125	830	287	11.3	1115	43.9	19	24

Upcoming Sizes

Tire Size	PR
12R24.5	16



AOR

“All Position” radial tire for regional and limited long haul applications



Optimized, wider tread design delivers longer mileage, while enhanced contact patch area reduces wear rate



Solid shoulder ribs help in resisting maneuvering scrub



Shallow tread reduces rolling resistance while resisting heat buildup and scrubbing in low platform trailer application

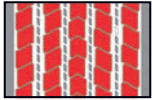


Tire Size	PR	LI/SS	Rim Width	Max.Load (Single)		Max.Load (Dual)		Relative Pressure		Section Width		Overall Diameter		Tread Depth	
			Inches	kgs	lbs	kgs	lbs	psi	kpa	mm	inches	mm	inches	mm	32nds
215/75R17.5	14	126/124L	6.00	1700	3750	1600	3525	100	690	210	8.3	770	30.2	10	13
215/75R17.5	18	135/133J	6.00	2180	4805	2060	4540	120	830	210	8.3	770	30.2	10	13

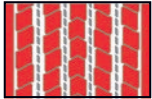


AOR2* NEW

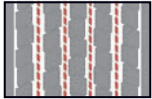
'All Position' tire for long-haul and regional applications offering enhanced steering and prolonged tire life



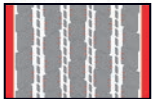
Five-rib pattern maximizes surface contact and bears load evenly



Wider, unique pattern prevents irregular wear and enhances tire life



Stone ejectors on every groove prevent retention of stones, ensuring better traction and grip



Unique shoulder design and sipes on center ribs offer enhanced wet braking and steering



Tire Size	PR	LI/SS	Rim Width	Max.Load (Single)		Max.Load (Dual)		Relative Pressure		Section Width		Overall Diameter		Tread Depth	
			Inches	kgs	lbs	kgs	lbs	psi	kpa	mm	inches	mm	inches	mm	32nds
215/75 R17.5	14	126/124L	6.00	1700	3747	1600	3527	100	690	210	8.3	769	30.3	12	15
215/75 R17.5	18	135/133J	6.00	2180	4806	2060	4541	120	830	210	8.3	769	30.3	12	15
235/75 R17.5	14	132/130M	6.75	2000	4409	1900	4188	112	775	235	9.3	800	31.5	13	16
235/75 R17.5	18	143/141J	6.75	2725	6007	2575	5676	125	860	235	9.3	800	31.5	13	16

